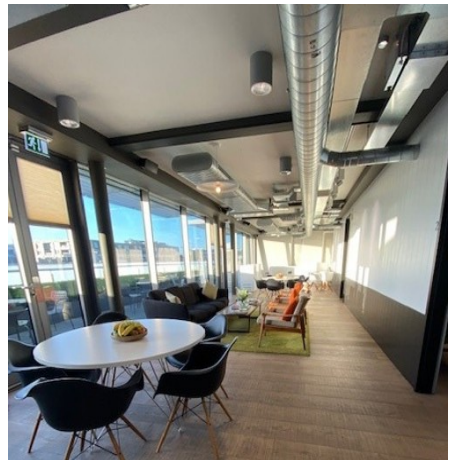


LIGHTING CONTROLS LTD

PROJECT BROCHURE

COST EFFICIENT LIGHTING CONTROL SYSTEMS TO REDUCE ENERGY CONSUMPTION







About Us

Lighting Controls Ltd have been at the forefront of lighting technology for 20 years and have launched some of the most advanced lighting control products on the market. Our solutions are quick to install, cost efficient and tailored to your needs. Since our establishment in 2004, we have earned ourselves a formidable reputation for designing, supplying, and commissioning our systems in almost every type of environment including commercial offices, schools, hotels, casinos, business parks, airports, spas, theatres and many more. You can count on us to understand your objectives, and to assist you to specify and execute your ideal lighting solution.



Barnet Grange Carehome

Barnet Grange Care home is a 100 room luxury care home built by the Signature Care Home Group . It has a combination of ensuite apartments with two rooms and or one room studio apartments with high end common areas such as lounges and activity rooms as well as a restaurant, Bistro, cinema, hair salon and Health Spa.



Lighting Controls were asked to provide a controls solution for all of the public areas including the corridors , lounges and reception . DALI gateways were supplied in some areas due to the solid ceilings with LCM's provided in the remainder. A full head end was installed to enable emergency monitoring in the public areas and scene sets plates in the lounges gives flexibility for changing the lighting levels when required.



Wellington Place

Transformed from a low-grade retail park to a multi-million-pound commercial property development, Wellington Place is now one of the most successful City Centre regeneration projects in the UK . The vision for Wellington Place was to create a development which celebrates the historic lifting tower on site while providing new high-quality public space to link the City Centre with the West End. 7 and 8 Wellington Place is a 378,000 sq. ft. office space that was fully let on a 25 year lease by HM Revenue and Customs for the Yorkshire government Hub and is expected to house both HMRC and NHS Digital.



Wellington Place required a modular solution to controls their lighting. Each floor is predominantly modular with large canteen areas on every floor. Open plan meeting spaces are placed though-out with private meeting rooms also incorporated.

Due to the large scale of each floor the floors were broken down into either 2 or 3 networks to ensure full control of each area. This breakdown allowed for more LCM' s which in turn created more individually controlled 'zones'. The installation of LCM's also allows for more flexibility during installation.

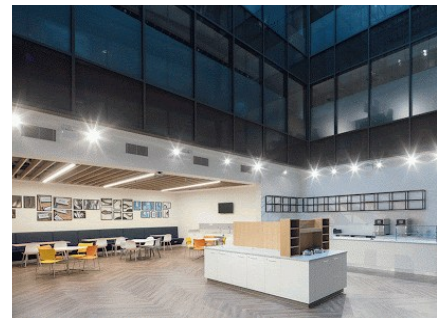




The large kitchen area on the ground floor was designed to be controlled with bespoke designed hard wired panels due to the restricted access in the ceiling void. The panels were mounted in the riser units which kept the ceiling space free.

Scene Set Plates were installed in the private meeting rooms to enable complete control of the lighting levels .

A full Head End was added to aid the monitoring of both the luminaires and the emergency system by the maintenance team .



Belgravia House

Belgravia House was built as a lodging house for destitute boys in 1912, and a red lamp shone from its roof as a beacon of hope and help for those in need. Following several extensions during the 1970's and 1990s, only the original front façade remained. In 2022, the owner sought to reposition the dilapidated building into first class offices, and commissioned Woodhouse to lead the project: an opportunity to celebrate its heritage and make it fit for the twenty-first century.



Lighting Controls Ltd supplied a DALI controlled system for Levels LG, G, and Levels 1-5.

It has a Gateway system throughout with DALI micro PIRs, for a discreet install, and scene plate in the reception to control lighting levels and set various scenes

A Hardwired Module has been included for the controls of the pendant lighting on the ground floor, the wall fittings and also the external lights.



9 Devonshire Square



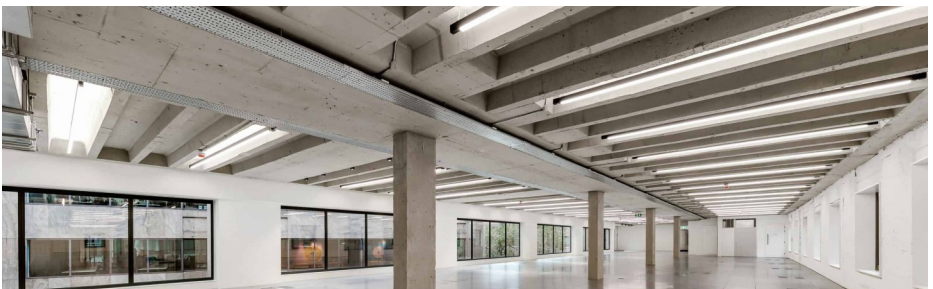
9 Devonshire Square was once a warehouse for the East India Trading Company spanning 7,300m² and has recently undergone CAT A refurbishment to provide flexible coworking space. The designs capitalised on the original brickwork and period warehouse features taking cues from the buildings 18th century heritage.



Due to the open ceilings, DALI Gateways were used when designing this office space with micro PIRS being installed in the light fittings for a more discreet look.

With a different ceiling type in the Toilets we have used pluggable LCMS and recessed PIRS for a flush finish.

9 Devonshire also has a Full Headend PC allowing for Emergency testing and monitoring of the Lighting Control system.



Lombard Street



Lighting Controls are very pleased to be part of the development of 30-32 Lombard Street. The project entailed the demolition of the existing building and construction of a new building covering 82,603 sq. ft (7,674 sq. m) spread over Basement, Lower Ground, Ground and 9 Upper Floors.

The new build expands the available volume of lettable office space which has been carefully designed to provide the greatest flexibility for tenants, featuring a spacious double-height atrium, with a light well extending to the sixth floor.



Lighting Controls supplied a DALI controlled system with Head End monitoring that will support the status of the emergency lighting at pre-programmed intervals. The system has the ability for daylight linking to ensure constant lighting levels in any part of the building, whatever the natural luminance. Presence detectors and scene set plates were provided in the Cat B fitout to aid with energy efficiency and ease of use for the client.

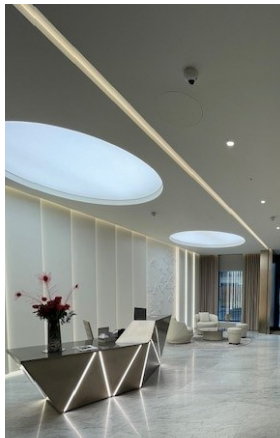
14 Grosvenor Street

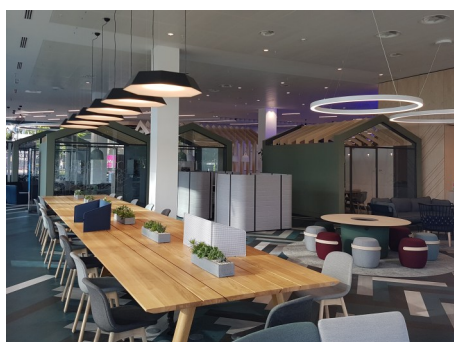
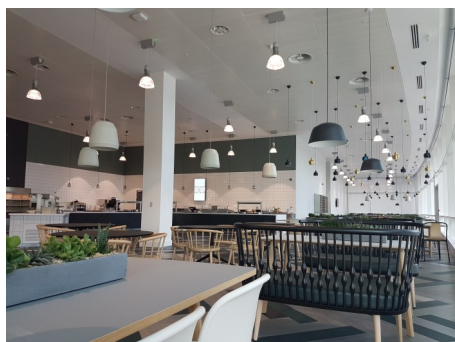


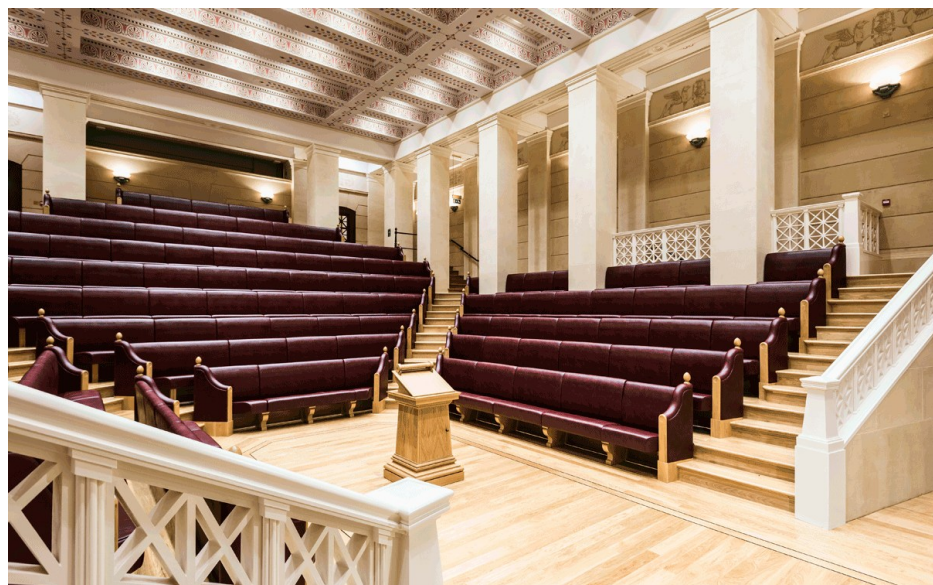
14 Grosvenor Street is a Victorian townhouse that was built in 1852 but due to damage to the building from the construction of a neighbouring building was demolished and replaced with a five storey 5,500 square foot contemporary office development. This new building was designed to have office space on 4 of its floors with the ground floor being used for a retail outlet.



Lighting Controls provided a full DALI addressable system with the reception area and meeting rooms controlled by a scene set place. The system was fully networked across the building to provide full monitoring of the luminaires, emergency lighting and any ancillary equipment via the head end computer. This system can also be monitored via any tablet or mobile phone that has been sync'd to the system.







Royal College of Surgeons



The Royal College of Surgeons of England is an independent professional body and registered charity that promotes and advances standards of surgical care for patients, and regulates surgery and dentistry in England and Wales. The college is located at Lincoln's Inn Fields in London and has its origins in the Company of Barber-Surgeons in 1540, under Henry VIII.

The college museum, which originated from 1813, re-opened in 2023, benefits from a new façade and entrance on the south of Portugal Street.

The redevelopment retains the historic frontage designed by Palace of Westminster architect Sir Charles Barry, whilst the rear focuses on being high-tech and environmentally sustainable, reflecting the College's changing functions as a home for surgical excellence in the UK and across the world.





Conference Rooms 1 & 2

Lighting Controls were asked to provide a controls solution for the entire building including the facade and DALI gateways were installed to the riser cupboards in some of the areas to help with installation due to the solid ceilings. LCM's were provided in the remainder of the building.

Conference Rooms 1 & 2 (image above) are often used for Weddings and events and it was specified to have RGBW lighting to create various moods of lighting, so this has been incorporated into our system.

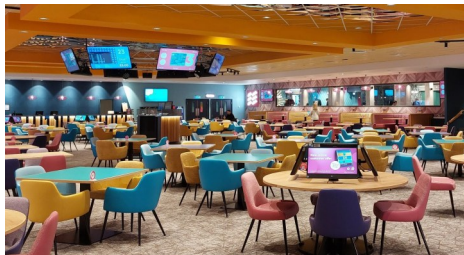
They also requested that each of the toilet cubicles had a separate DALI Relay for the solenoid control to turn the water supply off when the toilets are unoccupied for flood prevention.

A full head end was installed to enable emergency monitoring in all areas as well as offering the site full control over the lighting system.



Mecca Bingo

Mecca Bingo in Luton re opened in March 2021 after the building underwent a multi million pound renovation . The club boasts an all new modern design featuring larger bingo tables, updated food and drink venues, a contemporary layout and stylish design touches.



Mecca Bingo has a mixed system in place, consisting of simple switching marshalling boxes which are wired back to a DALI Gateway in a riser cupboard. This enables users to perform quick and easy changes in luminaire and PIR configuration.



The feature lighting throughout is controlled via phase dimmers which are then interfaced into the DALI system.

1000 Hillswood Park

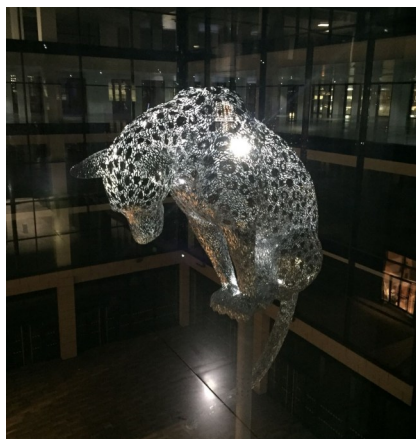
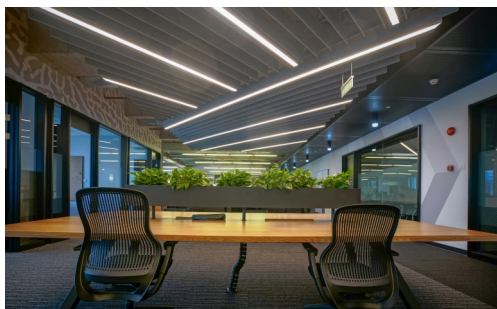
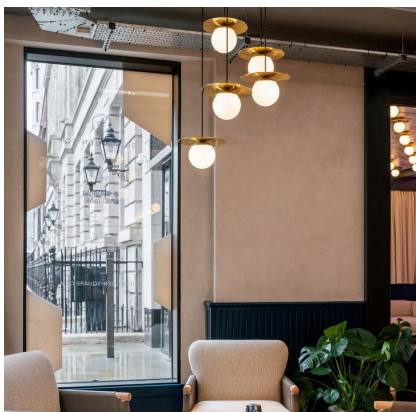


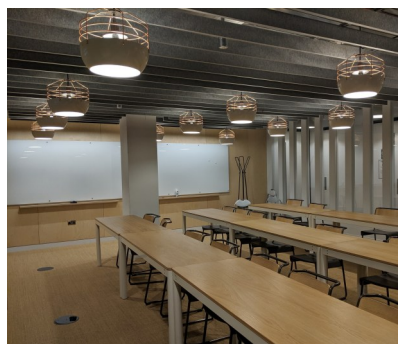
1000 Hillswood Park is a refurbished office building that is set in a natural surrounding to provide an enhanced working environment. The building underwent the net zero refurbishment with Market leading ESG credentials.

Lighting controls Ltd was chosen to provide an energy saving lighting scheme with discreet micro PIR's installed to help achieve the target BREEM Excellence and an EPC rating of A as well as an aesthetically pleasing finish.

These PIR's were mounted with in the lighting fittings that utilised the full ceiling heights.







Kao Park – Harlow Business Centre

Harlow Enterprise Zone is a new science and IT park in a campus style environment with excellent transport connections providing a new development for advanced manufacturing and life sciences/medical technology businesses. The on-site links with Anglia Ruskin University provide a dynamic collaborative environment between business and higher education with increased opportunities for innovation and enterprise. The Enterprise Zone contributes to economic growth and the UK's export potential.



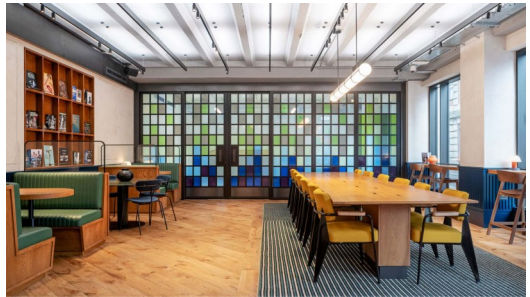
Comprised of two buildings (Kao One/ Building V and Kao Two/Building M), Kao Park is at the heart of the Harlow Enterprise Zone. Lighting Controls played an integral role in the redevelopment of Kao Two/Building M, now fully fitted to provide a mixture of individual management offices, meeting rooms and a large kitchen/break out area. The main body of the space provides banks of desks with modern workstations. We supplied a modular wiring system combined with DS10LCM's and CAN PIR's, with the illuminated wall graphics depicted also being fully controlled by the LCM's. This facilitated a fast and simple installation process for the electrical contractors.



30 Golden Square

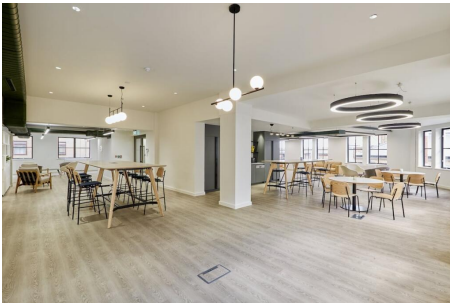
30 Golden Square is located in the heart of Soho and has 31,000 square ft of office space. This project has a wide range of Lighting Controls kit installed including pluggable LCMS and CAN PIRS throughout the Tenant spaces, and hardwired DALI Gateways covering the Landlord areas.

Many of the floors have subsequently had a CAT B fit out which included the installation of scene set plates so that lighting levels can be preset dependant on the requirements of the area. The scene set plates allow for 4 different light levels to be programmed per plate. The fully DALI addressable system is networked onto a full Headend system which enables emergency monitoring across the entire site.



Albion House

Completed in 2022 the 29,000 square foot office space has undergone a complete refurbishment including a reconfigured reception area, improved end of journey facilities for cyclists, terraces with views of London whilst offering flexible and diverse office space.



Understanding the client's specific requirements for each area, a flexible lighting controls system was installed to allow every area to be individually programmed. A range of LCM's and CAN PIR's, as well as a series of micro PIR's were installed within the light fittings to create a sleek and contemporary design.





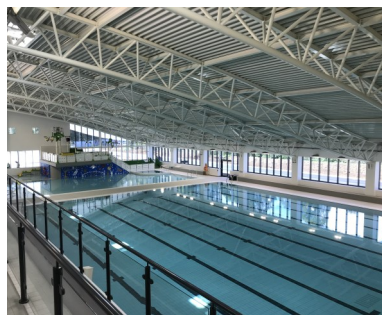
Braywick Leisure Centre



Lighting Controls have been extensively involved in the development of Braywick Leisure Centre, installing approximately 50 DALI gateways across the site to allow the user to easily control and monitor all areas. In addition, a series of DALI scene plates were installed in select areas to provide local control, including the main sports hall and the cultural hall.

Emergency fittings were installed in certain parts of the site, including the swimming pool area. For ease of access, most emergency fittings across the site have local batteries, and will be constantly monitored for potential faults or errors. The only exception is the emergency fittings within the swimming pool area, as access to these luminaires is challenging, and local battery replacement is therefore not possible. To overcome this issue, these luminaires were fitted with a central backup battery.

A 7" touch screen situated at the reception operates as the headend, providing a graphical view of the lighting control system. This headend allows staff situated at the reception to easily control and monitor all DALI controlled areas as well as all emergency fittings, including the squash courts, the health suite and the swimming pool area. In addition to the ease of control, the headend further enables users to schedule emergency tests and create a range of compliance reports.



40 Clarendon Road



Forty Clarendon Road has been extensively repositioned across 6 floors, with a remodelled and extended reception area that enables employees and clients to connect with each other in one place. The open plan floor plates range from 7,992 sq ft to 10,228 sq ft and offer contemporary space with an exposed services finish. All floors feature generous floor to ceiling heights which all make for an impressive space with great flexibility.

This was a standard LCM project across 6 different floors, stair cores and toilet areas. A TCP network was established between floors to allow inter floor communications, thus enabling complete control of escape routes and corridor hold based on occupancy anywhere in the building.



The project also included DALI Sub address LCM's and DALI Broadcast LCM's along with Hardwire relay modules for the stair cores. All emergency testing is performed using the Area Controller Key Switch, controlling the LCM emergency power ports. The building is now having a fitout on various floors for PWC.

Bristol City Football Club



Lighting Controls have finished installing an extensive lighting controls system at the new state-of-the-art training facility for Bristol City Football Club. The Robins High Performance Centre will be a central hub for both players and coaching staff, consisting of three full-size pitches, including a floodlit show pitch. The site also contains tactical and goalkeeping pitches, medical and rehabilitation facilities, sports science facilities, a kitchen and restaurant area, office space, education and welfare facilities and a fully equipped gym.



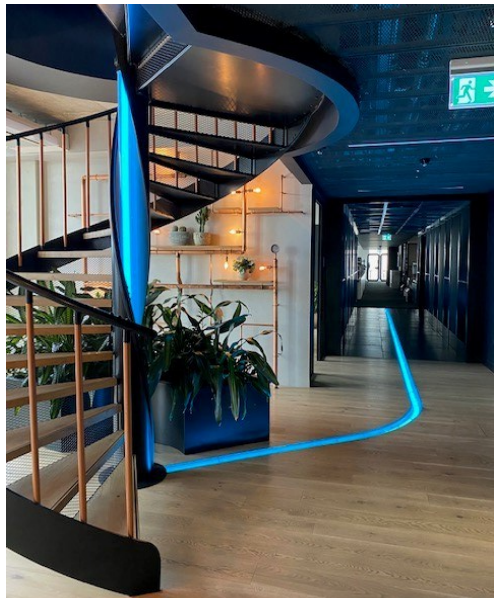
Understanding the client's specific requirements for each area, a flexible lighting controls system was installed to allow every area to be individually programmed to meet these needs. In addition to a range of LCM's and CAN PIR's, a series of micro PIR's were installed within the light fittings to create a sleek and contemporary design.

XTX Markets



With the assistance of Lighting Controls, Peldon Rose completed the offices for XTX Markets, technology company located in King's Cross of London. XTX Markets is a pioneer within the FinTech sector, leading the way as an award-winning electronic market maker since they were established in 2015. The firm has experienced consistent growth & to help maintain their current trajectory, XTX took 22,000 sq. ft. in the R7 building in King's Cross, the heart of London's tech hub.

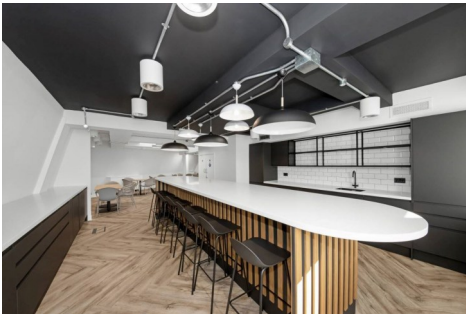
Lighting Controls provided DS10 LCM's along with CAN PIR's and scene set plates to provide complete control of the buildings lighting. The design led LED's throughout are controlled via the LCM's. While there is no head end within the design, the LCM's have been installed with our self healing software that enables the replacement of individual LCM's on the system without requiring the assistance of an engineer.



Swallow Place



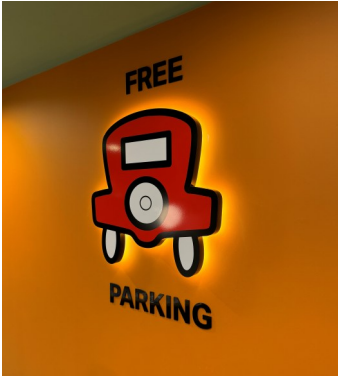
Situated in a prime location over-looking Oxford Circus, our lighting controls solution enables visitors to Swallow Place to enjoy the fantastic and undisturbed views of Oxford Street. The newly decorated open plan configuration offers plenty of natural light complimented by day lighting linking as part of our lighting control system, ensuring our lighting solution doesn't detract from the building's scenic



This project included 2 buildings 3-5 Swallow Place and 7 Swallow place. Each building has multiple floors and a fully managed lighting solution consisting of DALI controlled luminaires and DALI EMPro compliant emergency luminaires giving full control, fault reporting and Emergency light test reporting. The floor controls consist of both DALI Gateways and LCM's, with each floor being connected to a central backbone to provide multi-floor control and monitoring and complete management of the system. Following recent completion of the CAT A fit out are now undertaking CAT B fit outs tailored to the end user specification.



46 New Broad Street



46 New Broad Street, has an interesting internal design theme with each room being Monopoly inspired and featuring different stops and card logo's of the game board.

This site has recessed ceilings throughout and we have therefore, supplied pluggable LCMs within the ceiling voids and recessed PIRS.

The Free Parking sign on the wall, has an LED light behind which is controlled by a phase dimmer.



The utility feature (Light Bulb) has a large number of lamps which are controlled by a Hard Wired 6 Channel relay unit. This provides control of up to 6, 16A switching lighting control channels from compact din-rail modules. These modules are used for applications which require a non pluggable connection. This is secured in a riser.



Aviation House

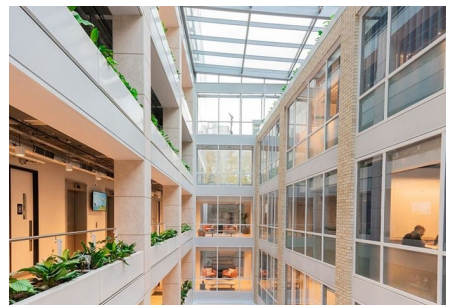
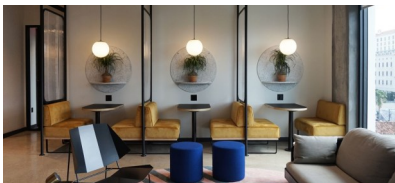
Aviation House, formerly the Church of the Holy Trinity, is a grade II listed building at 125-127 Kingsway in the London Borough of Camden.

A thriving area for professionals working in media, law, and finance, WeWork's Aviation House office space features a central location with unbeatable amenities. Spanning 10 floors of the renowned Aviation House building in Holborn, this coworking space features inviting lounges, private offices, and high-tech conference rooms.

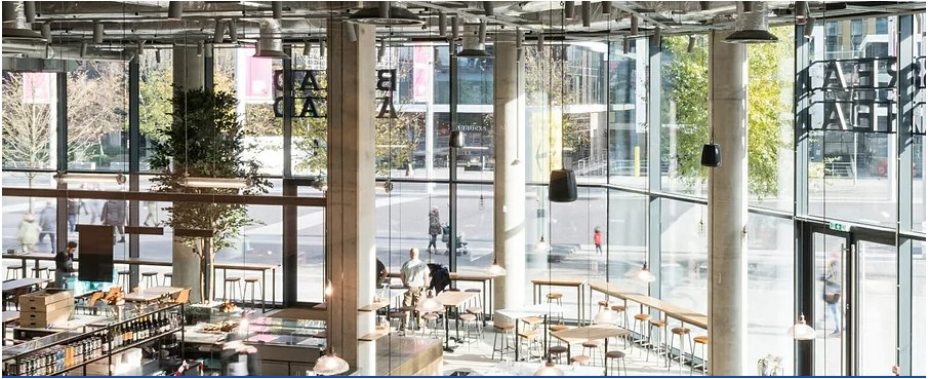


Lighting Controls Ltd provided DD1 LCM's and TCP-IP's to control all 1-10/ DMX/ DALI and Switching fittings as well as CAN PIRs and Scene Plates.

Fire alarm override integration is also present ensuring that if in the event that any fire alarm should sound then the lighting will automatically come on, assisting the fast evacuation of the site. With the night set back fittings the system has been programmed to maintain lighting at 20% in corridor areas when there is no PIR activation which again ensures the safety of personnel.



Bread Ahead



Bread Ahead Bakery in London represents an innovative new concept in bakery design. With the stylish bakery café and classrooms being used to hold workshops for budding bakers' skills, it was important to ensure that the new lighting system could adapt to best suit the activities taking place.

In association with Shoplight Ltd, the building's new system of DALI64 addressable gateway modules and a SSC4 seven button scene set plates gives the client the ability to actively raise and dim the lighting levels depending on the rooms current purpose.



Aldwych House



Aldwych House is situated near the Strand in one of the capital's busiest thoroughfares. The refurbishment of this high-end office space called for a sophisticated bespoke lighting controls philosophy. The renovation of levels 5 through to 8 feature a CAT A fit out with Head End emergency monitoring capability. The specification also called for intelligent DALI LCMs which utilise state of the art PIRs and custom scene set plates. Daylight linking is incorporated in to the system to harvest natural light to further reduce energy costs. Lighting Controls Ltd system effectively and efficiently controls the luminaires in the buildings atrium and lightwell to dramatic effect, in keeping with design concept.



On the lower ground floor, ground floor and levels 1 and 2 a full CAT B fit out was included for Weworks, the global network office space provider. Both presence and absence detection sensors were used in order to achieve the company's requirements for a system that would offer a flexible and adaptable work space for its creative tenant client base.

Capstan House



Lighting Control took an active role in the refurbishment of Capstan House, helping to make the building suitable for a range of workspaces, including small units for start-ups and young businesses. The installation is a fully networked multi-floor DALI controlled lighting solution supporting single and multi-tenancy on all 11-story's, as well as the central atrium at the core of the building.

Our system has a full monitoring solution to provide both luminaire status monitoring and emergency testing with compliancy emergency reporting. The solution uses the Lighting Control Ltd system throughout and also provides the ability for individual area control, along with a daylight dimming capability around the internal perimeter and atrium areas

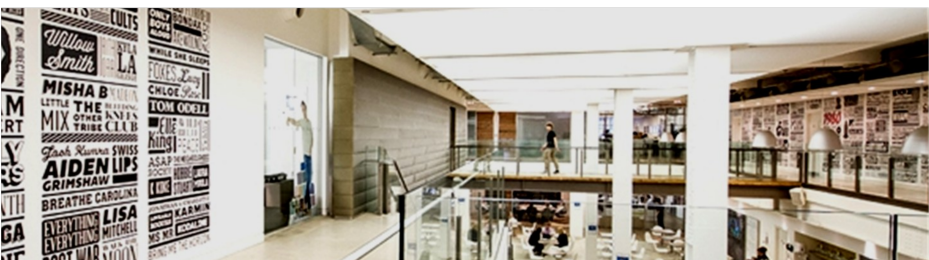




Lighting Controls completed the total office refurbishment of Sony's London office. Although the site had an existing lighting control system, the client decided as part of the upgrades and changes, they would remove the old system and install a hard-wired lighting control system with a central Head End PC, with scene setting, presence detection, an RS232 interface and hand-held infrared remote controls.



The system not only has a vast amount of features, controlling various luminaires, it is also easy to control and maintain. The complexity of the system required us to work closely with the main contractor in order to satisfy the client's exact needs.



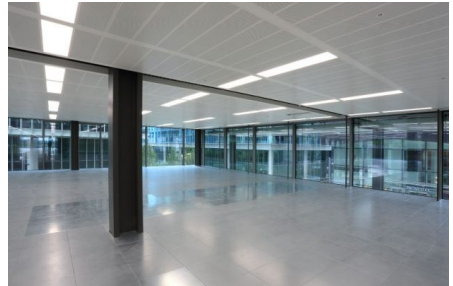
4 Kingdom Street



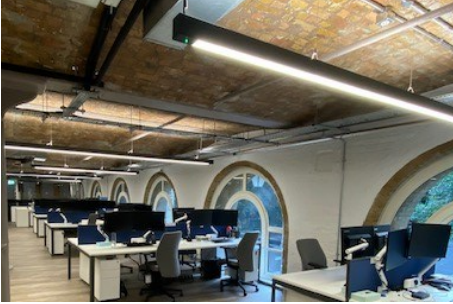
4 Kingdom Street is a 10 storey office block located in Paddington Central. Each floor of the building is approximately 15,000sq ft and has been redesigned with large corner terraces and glass panelled meeting rooms. The building design is intended to compliment the high end area in which it is located and make use of all natural light available

The system for this site had to be high quality, quick to install and flexible for future alterations. The main contractor, Wates, chose to install our LCM's with our modular wiring to meet the specification.

The project is currently in the tenant fitout stage where the adaptability of the lighting control system has allowed the installation of offices, meeting rooms and telepresence rooms.



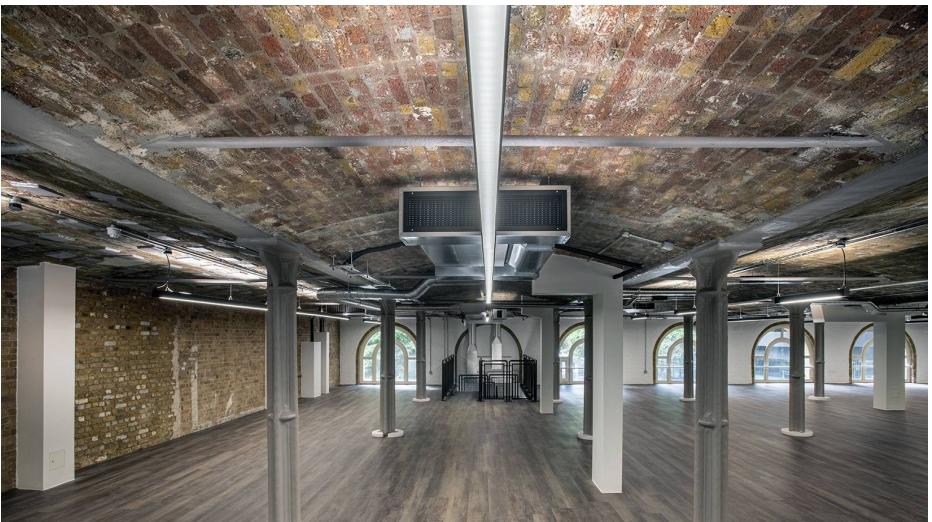
Battlebridge Lane

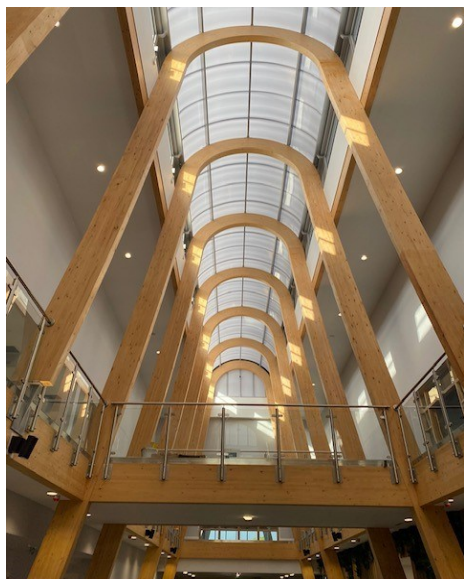
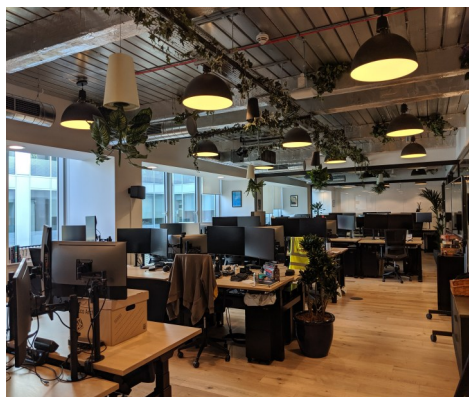
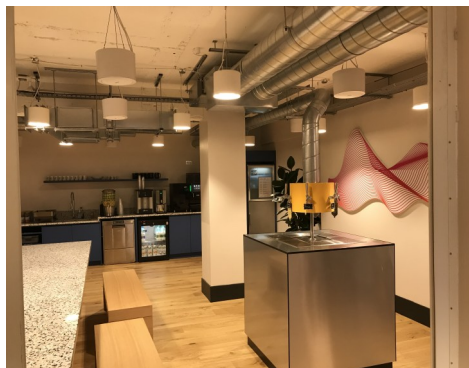


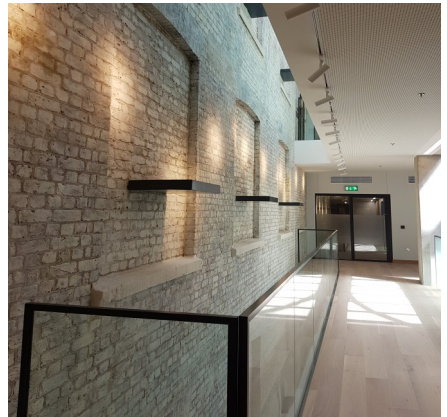
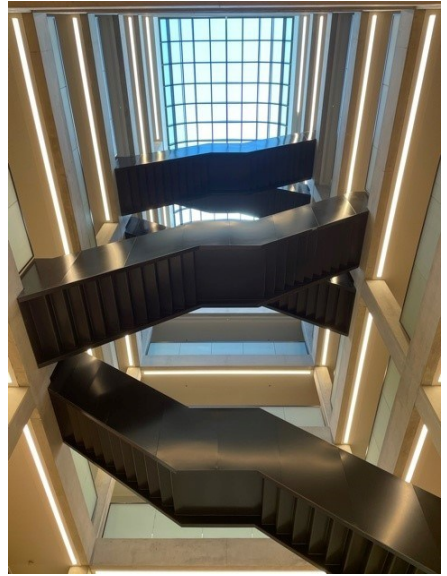
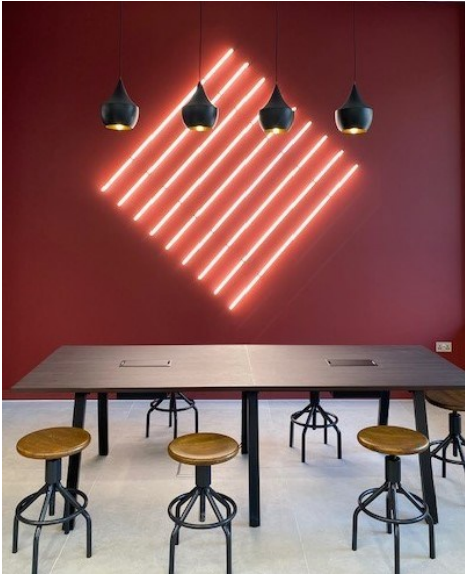
Hay's Studio is a self-contained office, centrally located in the famous Hay's Galleria and at the heart of London Bridge City, an iconic London neighbourhood. It offers an abundance of world class food, shopping and entertainment, as well as some of the best of London's tourist attractions, all along the River Thames.



Lighting Controls supplied a hard-wired addressable system that provides ease of install and can be configured to any desired layout. DALI PIR's and scene set plates were configured to give the end user the control required to maintain lighting levels for the working environment.









EXTENDED WARRANTIES

YOUR OPTIONS

All Lighting Controls Ltd products are protected by our standard two year warranty against manufacturing defects. We can also provide additional maintenance packages to offer added peace of mind. Our packages allow for clients to work to an agreed yearly budget with regular system service visits. In the unlikely event there is a system failure, our commissioning engineers are available within a pre-specified time schedule to attend and rectify any issues.

THE **SILVER** OPTION OFFERS YOU:

- ◆ One on-site system check per year **FREE**
- ◆ A given discount of the cost of repair or replacement of parts
- ◆ The labour cost in uninstalling and reinstalling the item that was defective is covered. 100% during years 1 and 2, 50% during years 3 and 4, 33% during years 5 and 6, and 25% from year 7 onwards if this extended warranty is valid
- ◆ A guarantee that our engineers will be at your site to replace or repair the product within 3 working days of you informing Lighting Controls Ltd of your problem

THE **GOLD** OPTION OFFERS YOU:

- ◆ Three on-site system checks per year **FREE**
- ◆ Software and firmware updates **FREE**
- ◆ Emergency Test Procedures conducted remotely (where applicable) **FREE**
- ◆ 100% repair or replacement of faulty components
- ◆ 100% coverage of the labour cost of uninstalling/reinstalling the faulty item if this extended warranty is valid
- ◆ A guarantee that if we cannot solve the problem remotely, an engineer will be on site within 48 hours of our being informed of your fault

MAINTENANCE CONTACTS:

Ella.Walker@Lightingcontrols.ltd.uk

Louise.Jordan@Lightingcontrols.ltd.uk

TEL: 01252 470027

To find out more about the range of products and services we offer and how these solutions can benefit you, **contact us today.**

LOCATED AT

1 Bourne Mill Business Park
Guildford Road
Farnham
Surrey
GU9 9PS



[linkedin.com/company/
lightingcontrols](https://www.linkedin.com/company/lightingcontrols)



lightingcontrols.ltd.uk

CONTACT DETAILS

General Enquiries
info@lightingcontrols.ltd.uk

Technical Assistance
technical@lightingcontrols.ltd.uk

Sales
sales@lightingcontrols.ltd.uk

Quotations
quotations@lightingcontrols.ltd.uk

Telephone
01252 470 027