



LIGHTING CONTROLS LTD NEWSLETTER-Project Focus

Autumn | Issue 8 | November 2020

Braywick Leisure Centre



Lighting Controls have been extensively involved in the development of Braywick Leisure Centre, installing approximately 50 DALI gateways across the site to allow the user to easily control and monitor all areas. In addition, a series of DALI scene plates were installed in select areas to provide local control, including the main sports hall and the cultural hall.

A 7" touch screen situated at the reception operates as the headend, providing a graphical view of the lighting control system. This headend allows staff situated at the reception to easily control and monitor all DALI controlled areas as well as all emergency fittings, including the squash courts, the health suite and the swimming pool area. In addition to the ease of control, the headend further enables users to schedule emergency tests and create a range of compliance reports.



40 Clarendon Road



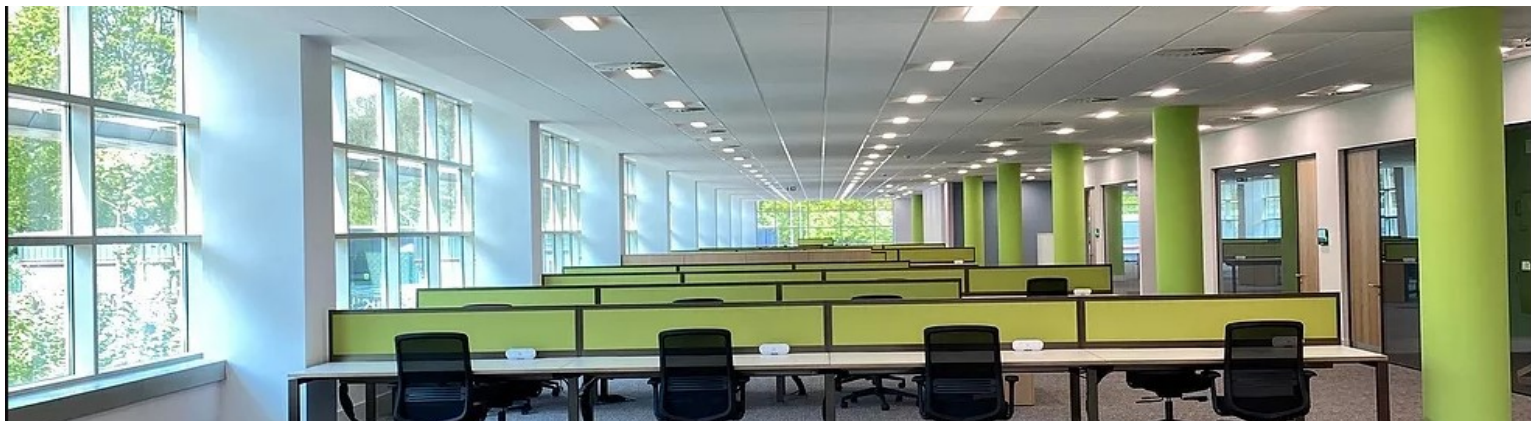
This was a standard LCM project across 6 different floors, stair cores and toilet areas. A TCP network was established between floors to allow inter floor communications, thus enabling complete control of escape routes and corridor hold based on occupancy anywhere in the building. The project also included DALI Sub address LCM's and DALI Broadcast LCM's along with Hardwire relay modules for the stair cores. All emergency testing was performed using the Area Controller Key Switch, controlling the LCM emergency power ports.



Lombard Street

Lighting Controls supplied a DALI controlled system with HEAD END monitoring that will support the status of the emergency lighting at pre-programmed intervals. The system has the ability for daylight linking to ensure constant lighting levels in any part of the building, whatever the natural luminance. Presence detectors and scene set plates were provided in the Cat B fitout to aid with energy efficiency and ease of use for the client.





Kao Park – Harlow Business Centre

Comprised of two buildings (Kao One/ Building V and Kao Two/Building M), Kao Park is at the heart of the Harlow Enterprise Zone. Lighting Controls played an integral role in the redevelopment of Kao Two/Building M, now fully fitted to provide a mixture of individual management offices, meeting rooms and a large kitchen/break out area. The main body of the space provides banks of desks with modern workstations. We supplied a modular wiring system combined with DS10LCM's and CAN PIR's, with the illuminated wall graphics depicted also being fully controlled by the LCM's. This facilitated a fast and simple installation process for the electrical contractors.

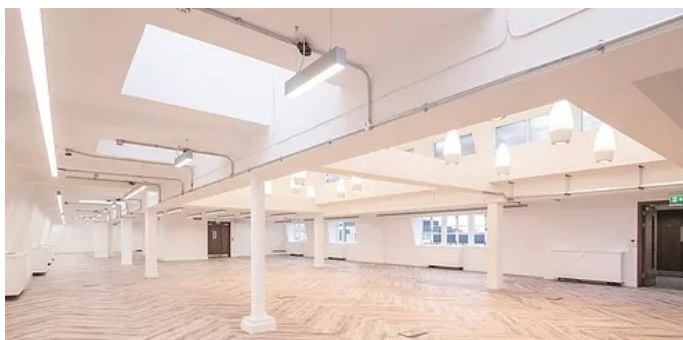


XTX Markets



Lighting Controls provided DS10 LCM's along with CAN PIR's and scene set plates to provide complete control of the buildings lighting. The design led LED's throughout are controlled via the LCM's. While there is no head end within the design, the LCM's have been installed with our self-healing software that enables the replacement of individual LCM's on the system without requiring the assistance of an engineer.

Swallow Place



This project included 2 buildings 3-5 Swallow Place and 7 Swallow place. Each building has multiple floors and a fully managed lighting solution consisting of DALI controlled luminaires and DALI EMPro compliant emergency luminaires giving full control, fault reporting and Emergency light test reporting. The floor controls consist of both DALI Gateways and LCM's, with each floor being connected to a central backbone to provide multi-floor control and monitoring and complete management of the system. Following recent completion of the CAT A fit out are now undertaking CAT B fit outs tailored to the end user specification.

Lighting Controls Ltd
5 Bourne Mill Business Park
Guildford Road
Farnham
Surrey
GU9 9PS

T: 01252 470 027
F: 01252 782 288
E: info@lightingcontrols.ltd.uk
W: www.lightingcontrols.ltd.uk

